

- 1 **Module Name/Menu Bar.**
Identifies current module and drop-down menus to select patient findings
New! Switch module capability toggles between modules while preserving patient findings
- 2 **Enter Findings.**
Allows for quick entry of patient findings
- 3 **Patient Findings.**
Lists the findings you've entered for your patient
- 4 **View Diagnoses By:**
Matches. Shows diagnoses with at least one match to Patient Findings list
Selection. Displays selected diagnoses for side-by-side comparison
- 5 **Diagnoses.**
Lists module diagnoses that match Patient Findings, sorted by rank
- 6 **Sort Diagnoses By:**
Matches. Displays diagnoses that match Patient Findings, sorted by rank
Emergency. Shows potentially life-threatening diagnoses that match Patient Findings
- 7 **Image Stack/Text Icons.**
Lets you drill down to view images showing variation in presentation and handbook-length text about each disease
- 8 **X of Y.**
Indicates image you're viewing and total number of images for a diagnosis
- 9 **Arrows.**
Moves you forward and backward through images
- 10 **Zoom In/Out.**
Double-click any image for a larger view; single-click to return to previous view



4 steps to a more accurate diagnosis

What is VisualDx?

VisualDx is *visual* clinical decision support software – an advanced approach to point-of-care decision making and a breakthrough in disease recognition.

When do I use it?

Next time you're faced with the question, "What is this?" for a patient who has:

- Fever and rash
- Flu-like illness
- Variation of a common skin condition
- Potential drug eruption

OR any other common or unusual visual presentation, including infectious disease and acts of bioterrorism.

How does it work?

VisualDx enhances the traditional process used for diagnosing patients by merging medical images with specialist knowledge. Enter patient symptoms, medical history, and other relevant findings. VisualDx refines a patient-centric differential diagnosis, presented visually so you can actually see the differential.

1 Get started. Choose a module.

VisualDx is organized by common and diagnostic problem areas as well as by age and body location, initiating a unique differential diagnosis right from the start.

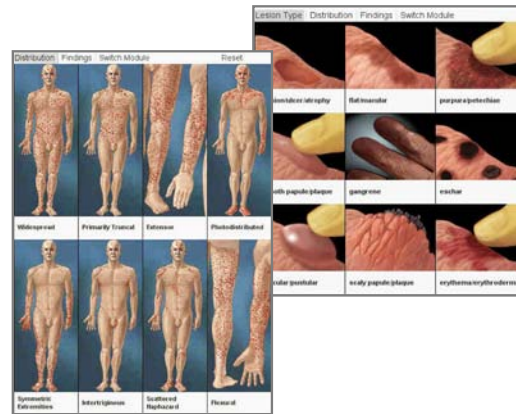
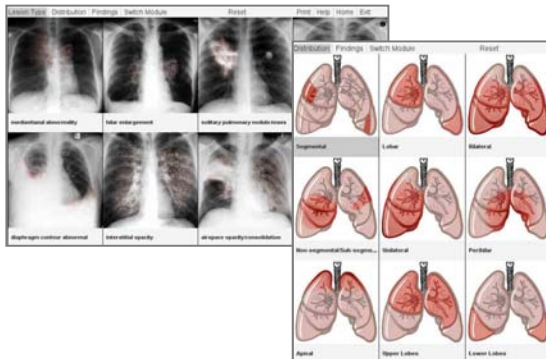


2 Build a patient-centric differential.

Our streamlined interfaces make matching your patient's visual evidence effortless. With each click of the mouse, you refine a patient-centric differential.

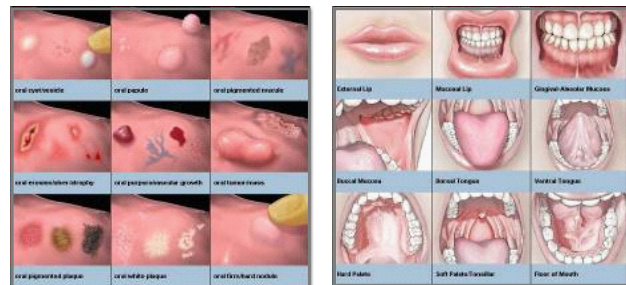
Standard

Used with the majority of modules. Quickly match your patient's lesion type and distribution pattern from the illustrated drop-down menus.



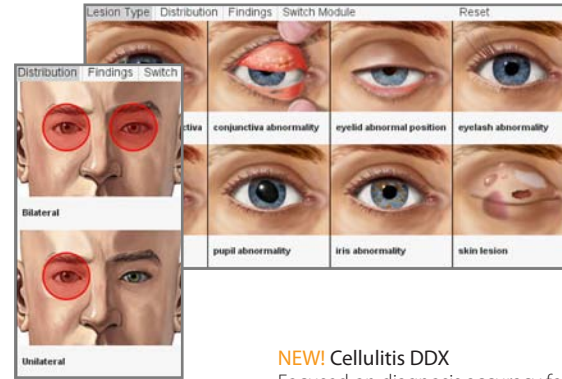
Acute Pulmonary Infection

Designed to help manage the diagnostic complexity of flu-like illnesses. Identify the pulmonary findings and distribution pattern that best match your patient's X-ray.



Oral Mucosal Lesion

Tailored for dental or primary care practices, avoid missing rare or potentially life-threatening conditions such as cancer. Choose the lesion type and distribution that best represents your patient's case.



NEW! Cellulitis DDX

Focused on diagnosis accuracy for this highly misdiagnosed condition. Select the patient's gender and body location, then answer the key questions and click Go.

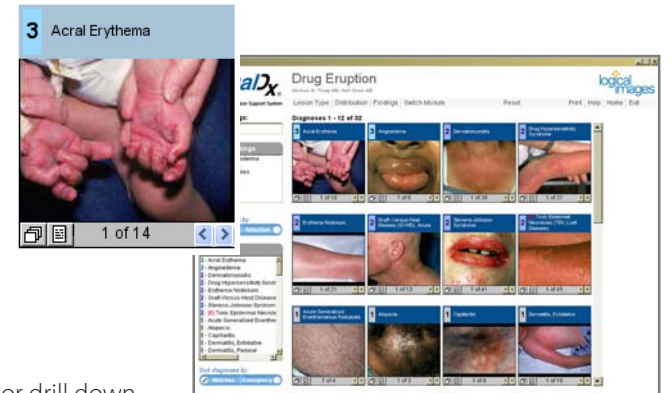
NEW! External Eye

Covers diseases of the eyelid, conjunctiva, cornea, sclera, pupil, and iris. The illustrated drop-down menus help to identify your patient's conditions.



3 See the differential.

Diseases are presented visually so you can actually see the differential. VisualDx dynamically builds and displays a pictorial differential diagnosis tailored to your patient's findings.



4 Get informed. Conclude diagnosis.

Compare most relevant diseases side by side or drill down to further research the diagnosis with handbook-length clinical information and variation in visual presentation, before concluding your diagnosis.

